



WOMEN / T-SHIRTS
STELLA RETURNS



STTW061

The women's ringer T-shirt

Single Jersey
100% Organic ring-spun Combed Cotton
120 GSM

- Set-in sleeve
- Neck collar and sleeve hem in self fabric contrast binding with double narrow topstitch
- Bottom hem with narrow double topstitch

RELAXED FIT

XS S M L XL

Size guide

COLORS



NAVY/MID HEATHER
GREY

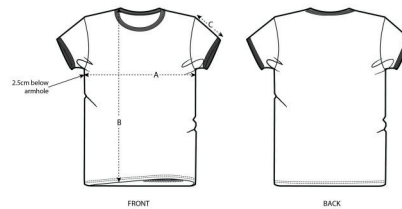
ESSENTIAL HEATHERS



HEATHER
GREY/FRENCH NAVY



CREAM HEATHER
GREY/HEATHER
CRANBERRY



SIZES		XS	S	M	L	XL
A	Half Chest	43.5	46	49	52	55
B	Body Length	63.5	65.5	67.5	69.5	70.5
C	Sleeve Length	16	16	17	17	18

Combo options



Stanley Holds

Printing Specifications

Fits all kind of printing techniques. For more information, please visit our website.

Wash similar colours together, do not iron on print, wash and iron inside out.

